

## **Guidelines for Authors: Preparation of Abstracts – Sample Abstract**

**Abstract title here in sentence case (no unnecessary capitalization), no underlining and no full stop at the end**

Firstname A Lastname<sup>1\*</sup>, Firstname B Lastname<sup>2</sup>, Firstname C Lastname<sup>3</sup>

<sup>1</sup>Department, University, Town, State, USA

<sup>2</sup>University, Town, County, UK

<sup>3</sup>Company, Town, State, Canada, Postcode

\*Email address of corresponding author if being included

The text in this abstract should not be more than 400 words, unless otherwise specified by your conference organizer. Please use single line spacing and type the text unjustified without hyphenating words at line breaks. Use hard returns only to end headings and paragraphs, not to rearrange lines.

Greek and other special characters may be included - if you are unable to reproduce a particular special character, please type out the name of the symbol in full. Please check if abstract submission systems have corrupted special characters or <p> values. SI units should be used throughout (litre and molar are permitted, however). Abbreviations should be used as sparingly as possible and should be defined when first used.

Citations to references should be included in square brackets [1,2], and citations to any figures (Figure 1) and tables (Table 1), must also be included in round brackets. All figures and tables need corresponding citations in the text, and vice versa.

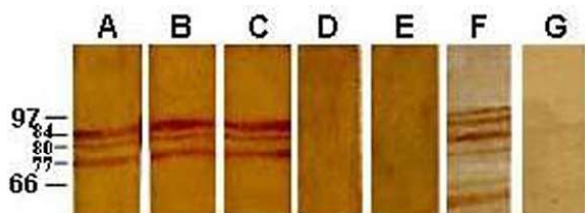
Structured headings such as Background, Results and Conclusions may be added.

Tables should be formatted using the "table function" in a word processing program not created with tabs or submitted as graphical items. Tables should not have highlighting or shading. Tables should be submitted in editable format.

	<b>X<sup>a</sup></b>	<b>Y</b>	<b>Z</b>	<b>p<sup>*</sup></b>
Parameter 1	≤9	10-12	≥13	0.01
Parameter 2 <sup>p</sup>	1.20	1.07	0.98	0.0001
Parameter 3	a	b	c	0.05

**Table 1.** Short title, maximum one sentence

Figure titles must form part of the text file and not be part of the graphical figure. Figures must be supplied electronically in the body of the text at 300 dpi minimum. Each figure (even if made up of parts) must be inserted as a single, composite file and not inserted into a table. Please align figures with text.



**Figure 1.** Short title, must be separate, editable text and not embedded in image.

### **Trial registration**

Current Controlled Trials ISCRTN73824458

### **Consent to publish**

If the abstract contains details relating to individual participants (for example a case report), written informed consent for the publication of these details must be obtained from the participants and a statement to this effect should appear at the end of the abstract. Our guidelines for consent statements can be found here:

<http://www.biomedcentral.com/about/editorialpolicies#Ethics>. If the patient is deceased consent for publication should be obtained from the next of kin and if the patient is under 16 consent should be obtained from the parent or guardian.

### **References**

1. Lastname A, Lastname B, Lastname C. Title of journal article. Journal Medline abbreviation. Year; Volume:first page-last page.

2. Lastname E. Title of book chapter. In: Lastname F, editors. Name of Book. Volume 2. 2nd edition. Place: Publisher; Year. p.first page-last page.